

### 3 Rivers Black B02

3 Rivers SC

Pasco, WA

B02 total strength=754

attack=1.16 defense=0.63

fall league = RCL B02 Div 2, RCL B02 Div 3, S

alt names used:

THREE RIVERS SC 3-RIVERS B02 BLACK (V

Three Rivers SC BU11 RCL Black - A

3RSC THREE RIVERS SC-BLACK (WA)

Venues played:

Sagebush Classic Boys U11 U11

Oswego Nike Cup Gold U11

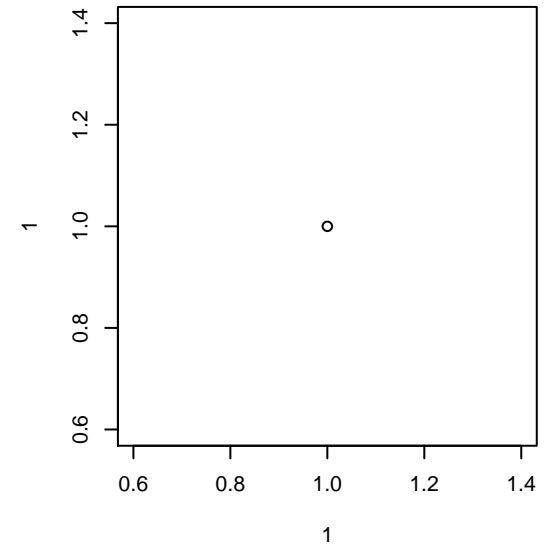
RCL B02 Div 3

RCL B02 Div 2

Spr RCL B02 Div 1

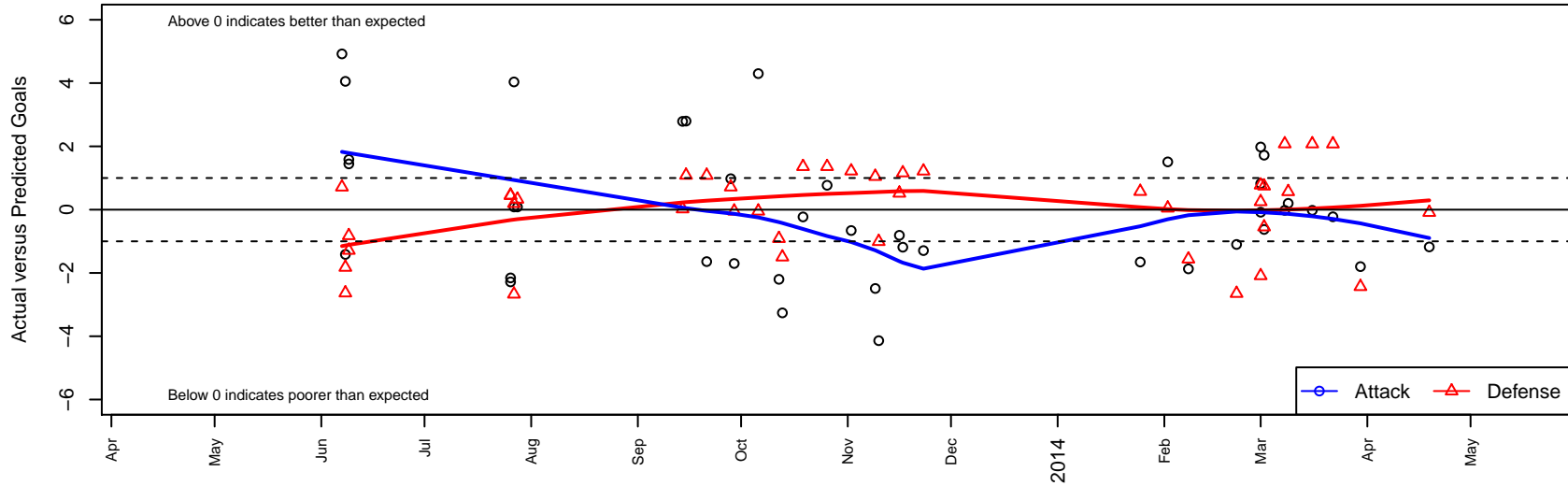
Blue Mtn Exchange Group A U12

Challenge Cup B02 Division 1 - Challenge 1



### 3 Rivers Black B02

Dots are actual minus expected GF (blue circles) and GA (red triangles).  
Blue line is smoothed change in attack strength. Red is smoothed change in defense strength.



|       | <b>date</b> | <b>home</b>                   |   | <b>away</b>              |   | <b>venue</b>                               | <b>pred.home</b> | <b>pred.away</b> |
|-------|-------------|-------------------------------|---|--------------------------|---|--|------------------|------------------|
| 26530 | 2014-04-19  | 3 Rivers Black B02            | 0 | WPFC Black B02           | 3 | Challenge Cup B02 Division 1 – Challenge 1 | 1.18             | 2.91             |
| 25517 | 2014-03-30  | FC Alliance A B02             | 4 | 3 Rivers Black B02       | 0 | Challenge Cup B02 Division 1 – Challenge 1 | 1.57             | 1.80             |
| 25132 | 2014-03-22  | Washington Timbers Red B02    | 0 | 3 Rivers Black B02       | 1 | Challenge Cup B02 Division 1 – Challenge 1 | 2.08             | 1.23             |
| 24880 | 2014-03-16  | 3 Rivers Black B02            | 1 | Crossfire Premier A B02  | 2 | Challenge Cup B02 Division 1 – Challenge 1 | 1.02             | 4.08             |
| 24218 | 2014-03-09  | 3 Rivers Black B02            | 2 | FC Alliance A B02        | 1 | Spr RCL B02 Div 1                          | 1.80             | 1.57             |
| 23876 | 2014-03-08  | 3 Rivers Black B02            | 1 | Crossfire Premier A B02  | 2 | Spr RCL B02 Div 1                          | 1.02             | 4.08             |
| 23681 | 2014-03-02  | FC Nova SuperNova Black B01   | 1 | 3 Rivers Black B02       | 4 | Blue Mtn Exchange Group A U12              | 1.74             | 2.28             |
| 23684 | 2014-03-02  | 3 Rivers Black B02            | 2 | CB United Navy B01       | 3 | Blue Mtn Exchange Group A U12              | 2.63             | 2.45             |
| 23418 | 2014-03-01  | 3 Rivers Black B02            | 2 | WPFC Black B02           | 5 | Spr RCL B02 Div 1                          | 1.18             | 2.91             |
| 23432 | 2014-03-01  | Soccer Edge Academy Black B01 | 0 | 3 Rivers Black B02       | 7 | Blue Mtn Exchange Group A U12              | 0.78             | 5.02             |
| 23433 | 2014-03-01  | 3 Rivers Black B01            | 2 | 3 Rivers Black B02       | 2 | Blue Mtn Exchange Group A U12              | 2.25             | 2.08             |
| 22920 | 2014-02-22  | 3 Rivers Black B02            | 1 | PacNW Maroon B02         | 5 | Spr RCL B02 Div 1                          | 2.10             | 2.35             |
| 22259 | 2014-02-08  | Crossfire Premier A B03       | 4 | 3 Rivers Black B02       | 0 | Spr RCL B02 Div 1                          | 2.44             | 1.87             |
| 22164 | 2014-02-02  | NWN Red B02                   | 2 | 3 Rivers Black B02       | 4 | Spr RCL B02 Div 1                          | 2.05             | 2.49             |
| 21697 | 2014-01-25  | Eastside FC Red B02           | 2 | 3 Rivers Black B02       | 0 | Spr RCL B02 Div 1                          | 2.57             | 1.65             |
| 19057 | 2013-11-23  | 3 Rivers Black B02            | 2 | FWFC Blue B02            | 0 | RCL B02 Div 2                              | 3.29             | 1.22             |
| 18731 | 2013-11-17  | Crossfire Premier B B02       | 0 | 3 Rivers Black B02       | 1 | RCL B02 Div 2                              | 1.16             | 2.19             |
| 18379 | 2013-11-16  | WPFC White B02                | 1 | 3 Rivers Black B02       | 1 | RCL B02 Div 2                              | 1.52             | 1.81             |
| 18014 | 2013-11-10  | Harbor Premier Green B02      | 2 | 3 Rivers Black B02       | 0 | RCL B02 Div 2                              | 0.99             | 4.14             |
| 17627 | 2013-11-09  | NWN Red B02                   | 1 | 3 Rivers Black B02       | 0 | RCL B02 Div 2                              | 2.05             | 2.49             |
| 16626 | 2013-11-02  | Eastside FC White B02         | 0 | 3 Rivers Black B02       | 2 | RCL B02 Div 2                              | 1.22             | 2.66             |
| 15743 | 2013-10-26  | 3 Rivers Black B02            | 2 | Seattle United Tango B02 | 0 | RCL B02 Div 2                              | 1.23             | 1.36             |
| 14808 | 2013-10-19  | Seattle United Tango B02      | 0 | 3 Rivers Black B02       | 1 | RCL B02 Div 2                              | 1.36             | 1.23             |
| 14284 | 2013-10-13  | NWN Blue B02                  | 2 | 3 Rivers Black B02       | 5 | RCL B02 Div 3                              | 0.50             | 8.26             |
| 13756 | 2013-10-12  | Crossfire Premier C B02       | 2 | 3 Rivers Black B02       | 1 | RCL B02 Div 3                              | 1.09             | 3.20             |
| 13224 | 2013-10-06  | 3 Rivers Black B02            | 8 | FC Alliance B B02        | 1 | RCL B02 Div 3                              | 3.70             | 0.95             |
| 12271 | 2013-09-29  | FC Alliance B B02             | 1 | 3 Rivers Black B02       | 2 | RCL B02 Div 3                              | 0.95             | 3.70             |
| 11817 | 2013-09-28  | WA Rush B02                   | 0 | 3 Rivers Black B02       | 5 | RCL B02 Div 3                              | 0.71             | 4.02             |

|       | <b>date</b> | <b>home</b>                 |    | <b>away</b>                      |    | <b>venue</b>                  | <b>pred.home</b> | <b>pred.away</b> |
|-------|-------------|-----------------------------|----|----------------------------------|----|-------------------------------|------------------|------------------|
| 10840 | 2013-09-21  | PacNW Blue B02              | 0  | 3 Rivers Black B02               | 2  | RCL B02 Div 3                 | 1.08             | 3.64             |
| 10384 | 2013-09-15  | 3 Rivers Black B02          | 6  | Crossfire Premier C B02          | 0  | RCL B02 Div 3                 | 3.20             | 1.09             |
| 9870  | 2013-09-14  | 3 Rivers Black B02          | 7  | Eastside FC Blue B02             | 1  | RCL B02 Div 3                 | 4.21             | 1.02             |
| 4956  | 2013-07-28  | 3 Rivers Black B02          | 3  | SESC Strikers B02                | 1  | Oswego Nike Cup Gold U11      | 2.91             | 1.33             |
| 4640  | 2013-07-27  | SESC Strikers B02           | 4  | 3 Rivers Black B02               | 3  | Oswego Nike Cup Gold U11      | 1.33             | 2.91             |
| 4642  | 2013-07-27  | Southside SC Revolution B02 | 1  | 3 Rivers Black B02               | 7  | Oswego Nike Cup Gold U11      | 1.19             | 2.96             |
| 4496  | 2013-07-26  | 3 Rivers Black B02          | 6  | WUSC Manchester United White B02 | 0  | Oswego Nike Cup Gold U11      | 8.28             | 0.44             |
| 4497  | 2013-07-26  | 3 Rivers Black B02          | 9  | Crossfire Oregon Red B02         | 0  | Oswego Nike Cup Gold U11      | 11.16            | 0.46             |
| 786   | 2013-06-09  | 3 Rivers Black B02          | 10 | Cobra Othello B02                | 3  | Sagebush Classic Boys U11 U11 | 8.55             | 1.71             |
| 787   | 2013-06-09  | Cobra Morritos B02          | 2  | 3 Rivers Black B02               | 4  | Sagebush Classic Boys U11 U11 | 1.18             | 2.41             |
| 704   | 2013-06-08  | Washington East SC B02      | 4  | 3 Rivers Black B02               | 10 | Sagebush Classic Boys U11 U11 | 1.37             | 5.95             |
| 707   | 2013-06-08  | 3 Rivers Black B02          | 1  | Cobra Morritos B02               | 3  | Sagebush Classic Boys U11 U11 | 2.41             | 1.18             |
| 699   | 2013-06-07  | 3 Rivers Black B02          | 14 | 3 Rivers Spencer B02             | 0  | Sagebush Classic Boys U11 U11 | 9.08             | 0.71             |